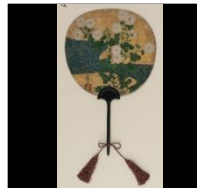




CD: The CD version of the slide set contains images formatted to approximately 1280 pixels wide at 96 DPI. These are meant to be projected for lectures; please do not reproduce them in any way. Each image will be named by the object number. A copy of this contact sheet and a Word document with label information will be included on the CD.



Geese over a Beach
Maruyama Okyo
1733-1795
Four-panel folding
screen; ink on paper
F1898.143



*On one side Narihira
and the pilgrim; on the
other, chrysanthemums
and a brook*
Ogata Korin, Japanese,
1658-1716
F1903.1



*Birds and Flowers of the
Four Seasons: Spring
and Summer*
Sesshu Toyo, 1420-1506
Japanese, Muromachi
period
F1953.94



*Portrait of the
poetess, Saigu no
Nyogo Yoshiko*
Japanese, Kamakura
period, 13th century
Purchase
F1950.24



Self-portrait
Kohno Michisei,
Japanese, 1895 - 1950
Kohno Michisei
S1998.115



*One Hundred Old Men
Gathering for a Drinking
Party*
Ike Taiga, 1723-1776
Japanese, Edo period,
18th century
F1960.22



Dish
Japanese, Edo period,
ca. 1650
Porcelain clay with
cobalt under colorless
glaze, enamels over
glaze
F1967.15



Fugen
Takuma Eiga (fl. early
14th century)
Muromachi period,
1333-1573
Hanging scroll; ink and
color on silk
F1904.202



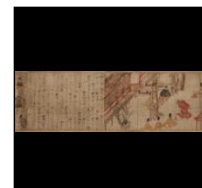
Cranes
Ito Jakuchu, 1716-1800
Japanese, Edo period,
1775-1790
Hanging scroll; ink on
paper
F1997.25.2



Mino ware tea bowl
Japan, late 16th
century
Stoneware with iron
pigment under Shino
glaze; gold lacquer
repairs
F1902.234



*Square dish with design
after poems of birds and
flowers*
Ogata Kenzan, 1663-1743
F1905.58



*The Miraculous
Interventions of Jizo
Bosatsu*
Japanese, Kamakura
period, 13th century
F1907.375a



Waves at Matsushima
Tawaraya Sotatsu, fl.
ca. 1600-1643
Japanese, Edo period,
17th century
F1906.231



Waves at Matsushima
Tawaraya Sotatsu, fl. ca.
1600-1643
Ink, color, gold, and
silver on paper
F1906.232



*Autumn at Asakusa (one
of a pair with
F1906.267)*
Hishikawa Moronobu,
1618-1694
F1906.266



*Screen (six panel)
Viewing Cherry
blossoms at Ueno Park*
Hishikawa Moronobu,
1618-1694
F1906.267



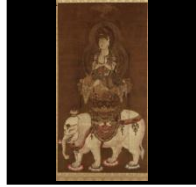
*Screen (six panel)
Birds and Flowers of
the Four Seasons:
Autumn and Winter*
Sesshu Toyo, 1420-
1506
F1953.95



Hanging scroll
Kiyataka Hasha Sonja
(J.) (Kanaka-vasta [S.]),
disciple of the Buddha
Arhat, from a set of
sixteen
F1904.296



Hanging scroll
Kanzan
Kao, fl. ca. 1300-1350
Japanese, Muromachi period, 14th century
F1960.23



Hanging scroll
(mounted on panel)
The Bodhisattva Fugen (Fugen Bosatsu)
F1963.6



Hanging scroll
The Deity of Kasuga
Wakamiya Shrine
Japanese, Muromachi period, 14th century
F1964.13



Incense Box
Japanese, Muromachi period, Red and black lacquer on carved wood
F1967.9a-d



Buddhist Altar pendant (keman)
Japanese, Kamakura period, 1185-1333
Bronze with gold and silver
F1974.13



Page from the Ishiyama-gire Poet: Ki no Tsurayuki
Attributed to Fujiwara no Sadanobu, 1088-1156
F1969.4



Screen (two-panel)
Thirty-Six Poets
Sakai Hoitsu, 1761-1828
Hara Yoyusai, 1772 - 1845
F1970.22



Handscroll
Imperial Anthology, Kokinshu
Hon'ami Koetsu, 1558-1637
Tawaraya Sotatsu, fl. ca. 1600-1643
F1903.309



Hanging scroll
Buddha Entering Nirvana
Japanese, Kamakura period, early 14th century
F1970.30



Buddhist Sculpture
Amida (Amitabha)
Kamakura period, early 14th Century
Wood with gold leaf
F2002.9a-f



Buddhist Sculpture
Bodhisattva Kaikei, active ca. 1185 - 1220
F1909.345



Jar
Shimizu Uichi, Japanese, 1926 - 2004
Stoneware clay with iron glaze
S1989.8



Hanging scroll
Thunder god
Katsushika Hokusai, Japanese, Ukiyoe school, 1760-1849
F1900.47



Hanging scroll
Moonlight Revelry at Dozo Sagami
Kitagawa Utamaro, Japanese, 1754 - 1806
F1903.54



Box
Tebako (box for a woman's cosmetics and personal accessories)
F1907.106a-b



Hanging scroll
Nyoirin Kannon
Japanese, Heian period, 12th century
F1961.6



Jar
Japanese, Kofun (Tumulus) period, ca. 550-600
Stoneware clay with natural ash glaze
F1976.2a-c



Handscroll
Selected poems Emperor Fushimi, 1265-1317; reigned 1287-98
F1976.7



Jar with burnished red slip
Japanese, Yayoi period, 1st century
Earthenware clay with burnished red slip
F1982.31a-c



Woodblock print
Woman applying makeup
Hashiguchi Goyo, Japanese, 1880-1921
Japanese, Taisho era, 1918
Robert O. Muller Collection
S2003.8.120



Woodblock print polyptych
Picture of Western Traders at Yokohama Transporting Merchandise
Hashimoto Sadahide, 1807 - 1873
S1998.55a-e



Freshwater jar for the tea ceremony (mizusashi)
Nonomura Ninsei (active ca. 1646-77)
Japanese, Edo period, mid 17th century
Stoneware clay with iron and rice-straw ash glazes; lacquered wooden lid
F1998.8a-i